

# STONE

---

Taking inspiration from natural and new man-made materials from across the globe, our experienced design team continually research new and upcoming interior trends to bring you a balanced collection of contemporary and timeless stone designs. Whether applying a modern twist to a traditional design or intricately cutting each tile to produce a bespoke flooring layout, fuel your creativity and find a floor you will love for years to come.



Send us your home installations to [twitter.com/Polyflorathome](https://twitter.com/Polyflorathome) and we will select the best ones to feature on our [blog.polyflorathome.com](https://blog.polyflorathome.com)

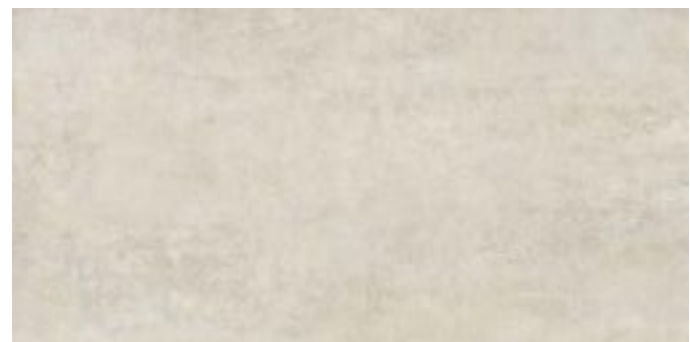


CAMARO™  
FLOORING COLLECTION



# White Metalstone 2332



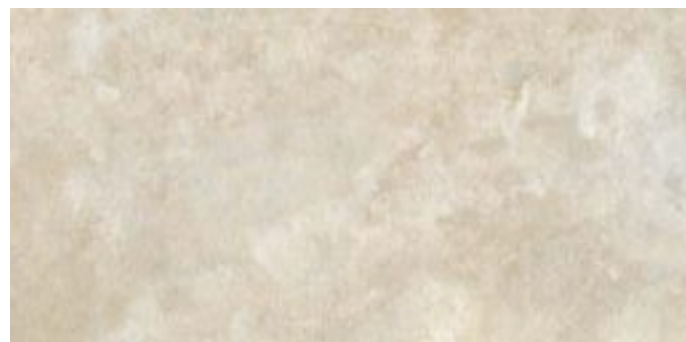


Tile size 304.8 x 609.6mm



# Portico Limestone 2334





Tile size 304.8 x 609.6mm



# Classic Yorkstone 2336





Tile size 304.8 x 304.8mm

1. Two tiles together laid brickwork, with Pearl Grouting Strip. Design ref: 405    2. Straight laid with ¼ tile and Cream Feature Strip tramline perimeter. Design ref: 526  
3. Straight laid. Design ref: 301



# Romano Stone 2301







Tile size 304.8 x 304.8mm



# Burnished Concrete 2342





Tile size 304.8 x 609.6mm



# Organic Concrete 2343



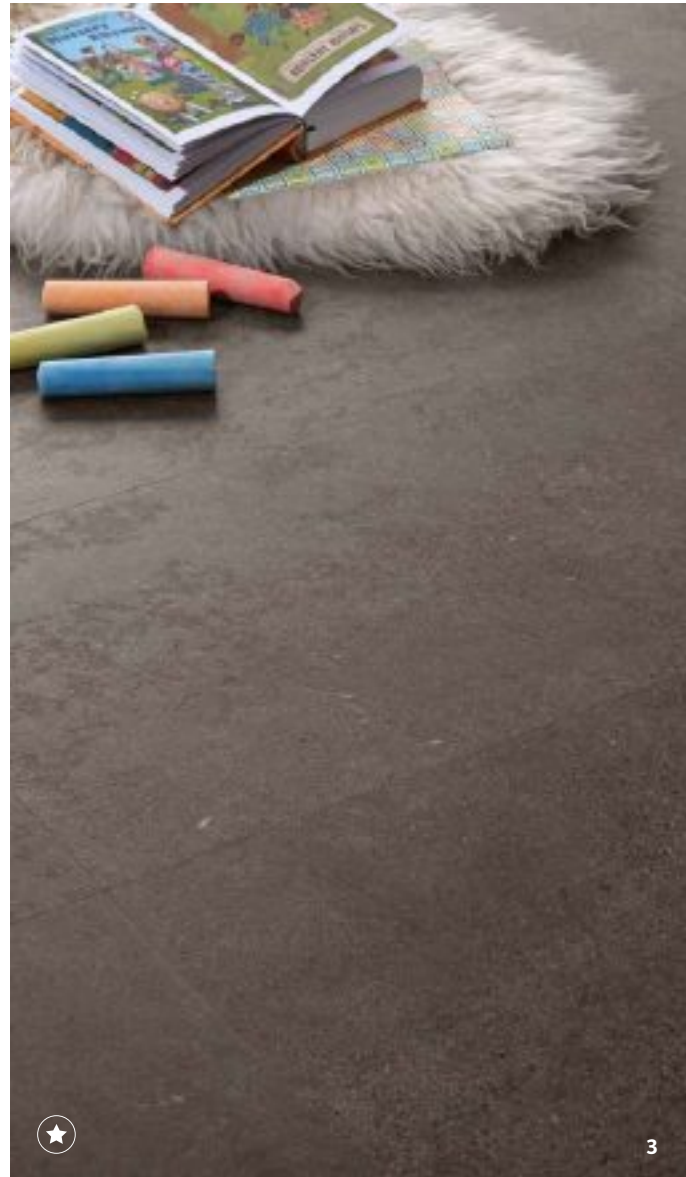


Tile size 304.8 x 609.6mm



# Smoked Concrete 2344



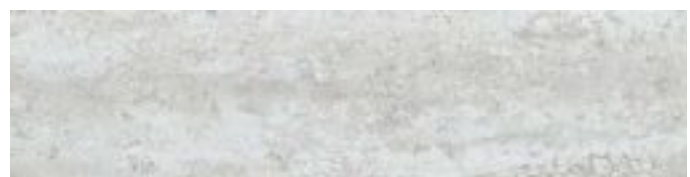


Tile size 304.8 x 609.6mm



# Glacier Slate 2345





Tile size 152.4 x 609.6mm









# Highland Slate 2346





Tile size 152.4 x 609.6mm



Arctic Slate 2341





Tile size 304.8 x 609.6mm

1. Brickwork. Design ref: 305   2. Off-set keysquare design, alongside White Metalstone with Grey Grouting Strip. Design ref: 425  
3. Brickwork, with Ice Grouting Strip. Design ref: 404



# Ocean Slate 2319







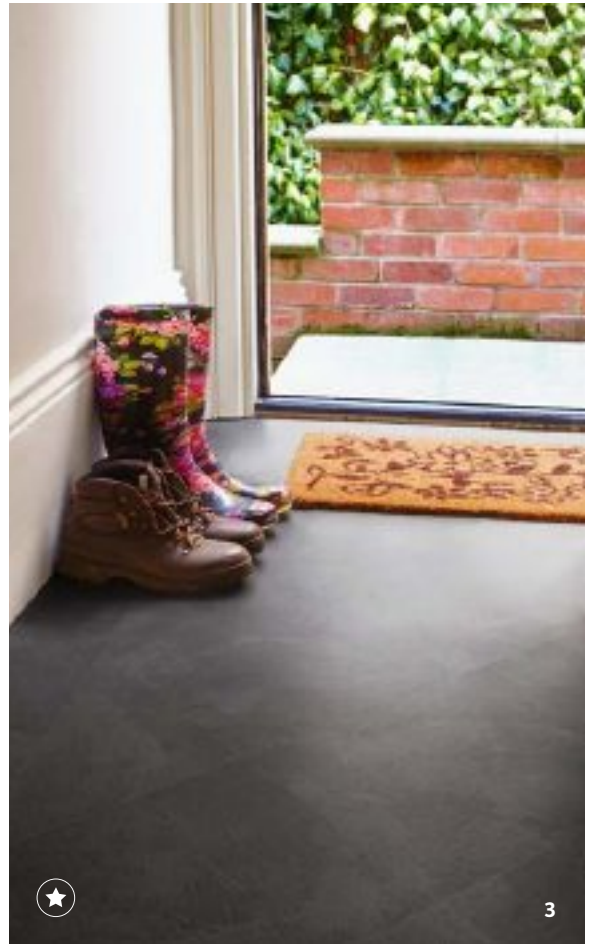
Tile size 304.8 x 609.6mm

- 
- 1. Brickwork. Design ref: 305
  - 2. Brickwork with Graphite Grouting Strip. Design ref: 404
  - 3. Dual width tiles, cut in  $\frac{1}{2}$  and  $\frac{1}{4}$  lengthways, alongside White Metalstone with Pearl and Grey Grouting Strip. Design ref: 421



# Atlantic Slate 2339





Tile size 304.8 x 304.8mm

1. Large square tile effect, laid brickwork with Pearl Grouting Strip. Design ref: 409    2. Two tiles, straight laid with Ice Grouting Strip. Design ref: 408  
3. 45° Straight laid, with half tile perimeter. Design ref: 522



# CREATE YOUR DREAM HOME

---

Engineered to be both functional and beautiful, every design in the Camaro collection offers you an imaginative and aspirational floorcovering without compromising on durability. There are an infinite number of laying patterns and shade combinations to choose from, so the following pages are designed to guide you through the process of selecting your favourite shades, flooring layouts and accessories. You can then order samples to be delivered free to your home for you to make your final selection.

Whether you choose a simple, classic flooring layout or an intricate bespoke design, Camaro makes it easy to start planning your ideal space.



Send us your home installations to [twitter.com/PolyfloratHome](https://twitter.com/PolyfloratHome) and we will select the best ones to feature on our [blog.polyflorathome.com](https://blog.polyflorathome.com)





Benji Calkins  
Hudson Brothers  
Stylo Calkins  
K140  
402746



CAMARO™  
FLOORING COLLECTION



# THE **STONE** COLLECTION



**2336** Classic Yorkstone  
304.8 x 304.8mm

R10



**2301** Romano Stone  
304.8 x 304.8mm

R10



**2339** Atlantic Slate  
304.8 x 304.8mm

R10



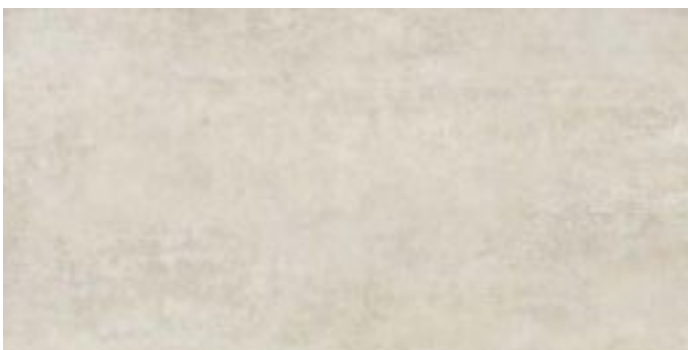
**2345** Glacier Slate  
152.4 x 609.6mm

R10



**2346** Highland Slate  
152.4 x 609.6mm

R10



**2332** White Metalstone  
304.8 x 609.6mm

R10



**2334** Portico Limestone  
304.8 x 609.6mm

R10

# CAMARO™

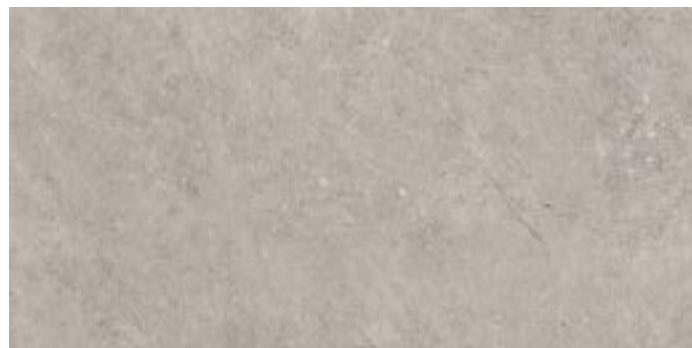
FLOORING COLLECTION



**2341** Arctic Slate

304.8 x 609.6mm

R10



**2342** Burnished Concrete

304.8 x 609.6mm

R10



**2319** Ocean Slate

304.8 x 609.6mm

R10



**2343** Organic Concrete

304.8 x 609.6mm

R10

The **R values** shown denote a ramp test result, which is an ex-factory measure of slip resistance. For safety flooring with sustainable wet slip resistance, refer to Expona Control PUR or the Polysafe ranges.



**2344** Smoked Concrete

304.8 x 609.6mm

R10

With regard to colour printing, it is only possible to give a provisional representation of the product colour. For colour selection, an original sample should be used which we shall be pleased to supply free of charge. To replicate the natural material, the stone effect tiles may include variation in markings as part of their design.



# ACCESSORIES

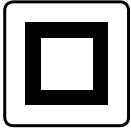
---

Creating a stylish and individual floor for your home is now even easier. Whether you are looking to add details and highlights or want to push boundaries with a bespoke design, it's all simple to achieve with our carefully selected range of inlay accessories.



Send us your home installations to [twitter.com/Polyflorathome](https://twitter.com/Polyflorathome) and we will select the best ones to feature on our [blog.polyflorathome.com](https://blog.polyflorathome.com)





# ACCESSORIES

We offer an exclusive selection of inlay accessories that have been purposefully designed to enhance each shade within the Camaro collection.

## Grouting Strips

Typically laid between stone tiles, grouting strips can be used as a subtle close-to-tile colour addition to your floor, or you can select a lighter or darker shade to create a contrasting effect.

Strip size: 3mm x 914mm



**2031** Ice



**2033** Pearl



**2035** Grey



**2037** Coffee



**2039** Graphite



Ice Grouting Strip with Atlantic Slate.

## Marquetry Strips

These strips are ideal for laying between planks to create designs such as ships decking, perimeter borders or highlighting room features like fireplaces and island units.

Strip size: 3mm x 914mm



**2056** Maple



**2057** Natural Oak



**2058** Classic Oak



**2059** Walnut



Classic Oak Marquetry Strip with White Limed Oak.

**Design Tip:** *It is worth noting that although the Grouting Strips are ideal for the stone tiles and the Marquetry Strips suit the wood planks, they can be mixed and matched between tiles and planks to further create a unique look.*

**Note:** As the Grouting, Marquetry & Cross Grain Marquetry Strips are cut from natural wood and stone designs, there will be variation in markings and decoration.



## Cross Grain Marquetry Strips

Running across the natural wood grain, these eye catching strips create a distinct effect when used individually or in varied combinations.

Strip size: 10mm x 914mm



**1011** Classic Oak



**1012** Walnut

Strip size: 25mm x 914mm



**2511** Classic Oak



**2512** Walnut



Classic Oak and Walnut Cross Grain Marquetry Strips with Sienna Oak.

## Feature Strips

Feature strips bring a bold statement look to both planks and tiles. Create a focal point or use as a metallic highlight for a striking luxurious finish.

Strip size: 5mm x 1000mm



**0026** Gold



**0025** Silver



**0028** Black



**0032** Cream



**0031** Brown



Brown Feature Strip with Vintage Timber.



2248 Sienna Oak



2342 Burnished Concrete

# CREATIVE EDGE

What will you create?



Hexagon Pattern ★★



2343 Organic Concrete



2344 Smoked Concrete



# CREATIVE EDGE Design Floors Stone

As with the Wood design floors, the drawings below provide you with a wide creative scope to help you achieve a beautiful floor installation. You can even take ideas from various formats and design your own.



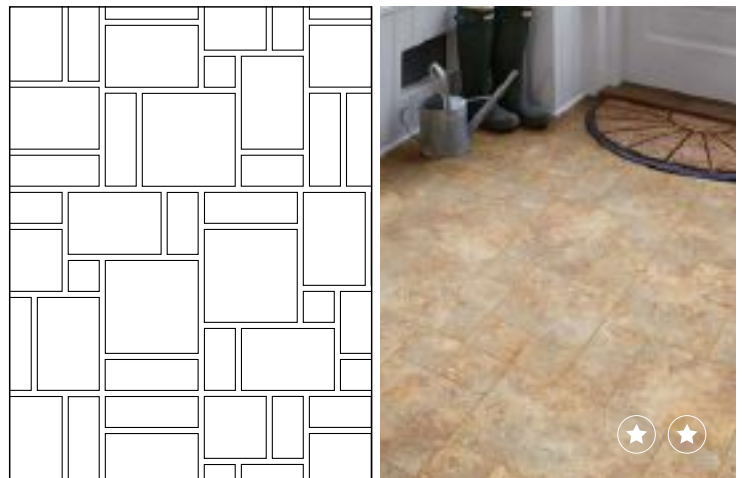
Square tile with strip around every 2 tiles, laid brickwork (rectangular tile effect).  
Design ref: 405



Stone Herringbone using rectangular tiles and strip.  
Design ref: 429



Large square tile effect, laid brickwork with strip.  
Design ref: 409



Assorted paving effect with strip.  
Design ref: 427



Dual width tiles (typically cut in 1/2 & 1/4 tiles lengthways) with strip.  
Design ref: 421



Off-set key-square design with strip.  
Design ref: 425

If you have a specific design in mind which is not covered here, discuss it with your provider to see how it can be achieved.

CUTTING PRICE GUIDE



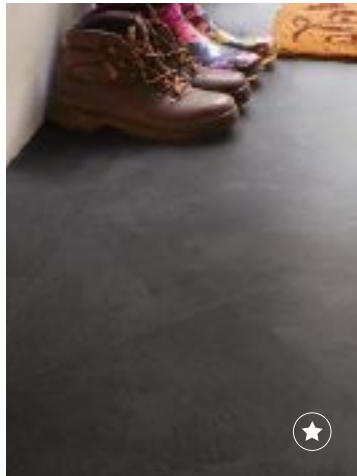
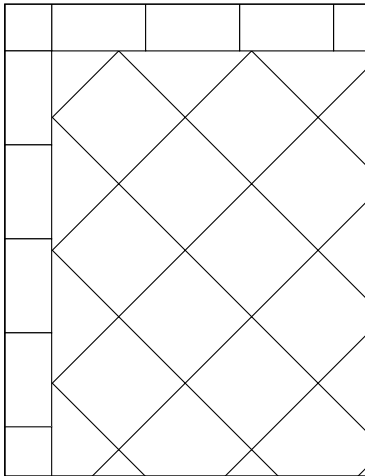
**STANDARD**  
no cutting



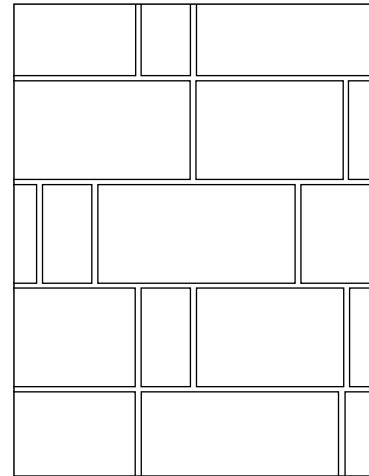
**STRAIGHT**  
basic cutting



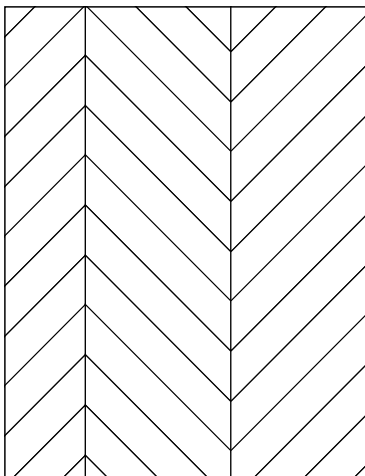
**BESPOKE**  
complex cutting



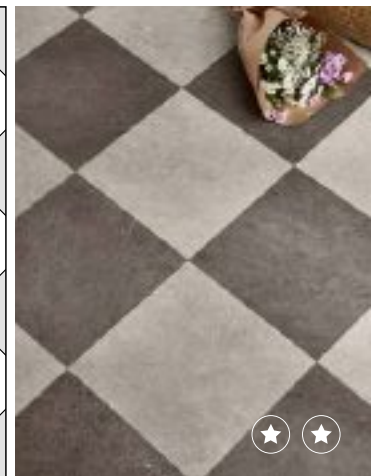
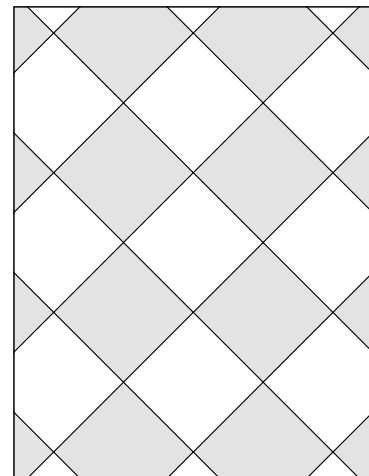
Square tile laid 45° with half tile perimeter.  
Design ref: 522



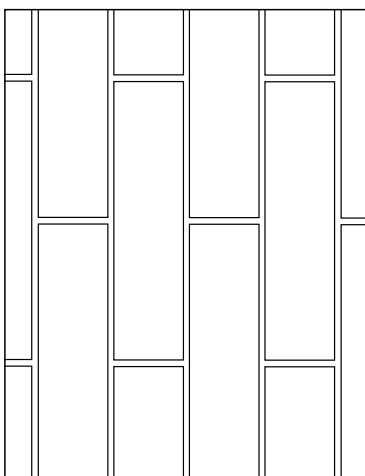
Varied width tiles with strip.  
Design ref: 422



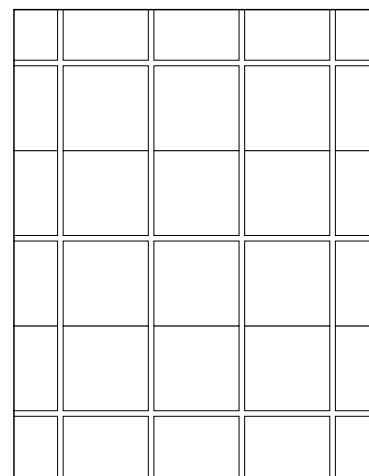
Off-set chevron cut tiles - 2 colours.  
Design ref: 431



45° Chequerboard effect - 2 colours.  
Design ref: 416



Slim tiles laid brickwork with surrounding strip.  
Design ref: 404



Two tiles installed together with strip to give a rectangular tile effect.  
Design ref: 408



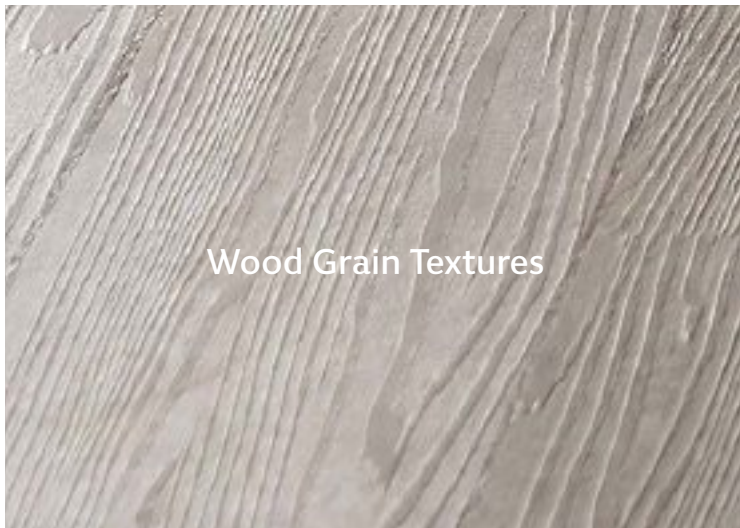


## HINTS AND TIPS

The following pages are designed to provide you with further product information and even more ideas, to help you create a beautiful and practical home.

### Surface textures

Each Camaro product has been developed to replicate the beauty and feel of natural materials. The wood planks feature a variety of surface textures from a smoother wood grain to heavier and more rustic aged timber effects, matching the relevant wood species. The stone tiles incorporate smooth and sleek finishes, natural slate textures and riven stone effects. Window and interior lighting can pick up these surface textures as can bare feet, which all add to the authenticity of the floor.



### Floor direction

The direction of the installed floor can also have a bearing on the overall aesthetic. As an example, to give the appearance of a natural timber floor the planks should be laid running against the supporting underfloor joists, as floor boards would be. Alternatively you may wish to run them on an angle or in a parquet floor feature, such as herringbone. The stone tiles can be utilised in a number of ways including straight laid, on angles and with accessories.



## Polyflor at Home Blog

Bursting with design advice and fun interior discussions, our Polyflor At Home blog is another great resource to help inform and inspire your final flooring choice. We regularly post articles about design floors, trending interior topics and inspiring home makeovers, providing an invaluable guide on how to refresh your home.

### RECREATE THE LOOK...

If there is a particular installation that you love the look of, we frequently post 'recreate the look' articles listing where you can find furniture and accessories like the ones featured in our lifestyle photography.



[blog.polyflorathome.com](http://blog.polyflorathome.com)

### SEASONAL HINTS & TIPS

Different times of the year bring different interior trends, from getting ready for the Christmas party season to spring cleaning your home, we bring you the latest styling tips all year round.



### CUSTOMER INSTALLATIONS

We love our customers sending us beautiful installation photography featuring their new Camaro floors. These interiors provide continuous inspiration for us, which is why we showcase the best of the bunch on our blog so you can be inspired too.



For even more hints, tips and beautiful interior photography why not connect with us and browse our Pinterest, Twitter, Facebook and Instagram posts.





# ENVIRONMENT

Polyflor have for many decades been recognised as a leading global manufacturer of high quality, high performance floorcoverings. We have demonstrated a high level of commitment and endeavour to minimise the impact of our products on the environment whilst maximising the performance benefits of our flooring throughout their entire life.

Camaro is 100% recyclable and can be recycled many times without losing any of its performance properties. It contains an average of 40% recycled material, and can be recycled via Recofloor, a vinyl flooring take-back scheme for recycling post consumer waste. Along with low VOCs, energy efficient manufacturing, long life and low maintenance it is clear why Camaro achieves BRE A+ rating for its LCA performance.

**Choosing an environmentally preferable product from Polyflor means zero compromise in the function of the product.**



### VOC EMISSIONS:

Indoor Air Comfort GOLD - Eurofins certified product  
AgBB - Low result  
FloorScore - Certified product



Refer to BRE Global ratings on [www.greenbooklive.com](http://www.greenbooklive.com)

For further details on Polyflor's achievements in areas such as recycling, energy reduction and waste avoidance log onto [www.polyflor.com/sustainability](http://www.polyflor.com/sustainability)



# GUARANTEE

## 10 year product guarantee

The Camaro collection of luxury vinyl tiles has been developed to meet the highest technical specification of its product type. Ideal for all areas of the home, the products ensure high performance and optimum style. In addition, Camaro is suitable for moderate commercial applications such as light traffic areas within hotels, conference rooms and small offices.

Compared with many natural flooring options, Camaro will under normal conditions resist household stains and will not crack, chip or splinter. The manufacturers of Camaro are confident that their high quality products will provide many years of valuable service. All products purchased from the range are guaranteed for 10 years against normal wear and tear in the recommended environment, provided that they have been fitted correctly and maintained in accordance with the manufacturer's instructions. Full terms and conditions of the guarantee are available on request from your flooring wholesaler or Polyflor Ltd.





# FLOORCARE

We want your Camaro floor to look it's best for many years to come and to help you achieve this we have laid out the following floorcare guidelines. Camaro does not harbour dust mites or bacteria making it ideal for the home environment.

## Initial cleaning after your new floor has been installed:

- Avoid walking on the floor for at least 24 hours following completion of installation.
- Sweep or vacuum to prevent loose dirt or grit from scratching the floor.
- Polishing your floor can be beneficial to help prevent slight surface scratches and to provide further protection.

## Day to day cleaning:

- Sweep or vacuum the floor to remove loose dirt, grit or dust.
- Use clean mops and neutral cleaning solutions to regularly clean your floor.  
*Contact Polyflor for details of approved maintenance products.*
- Dilute the floor cleanser to the manufacturer's instructions.
- Mop the floor evenly.
- Collect any excess liquid in a mop bucket.
- Rinse the floor with clean water and allow to dry.

## Regular cleaning is more beneficial to the floorcovering and is more cost effective than occasional heavy cleaning.

**Do:**

- ✓ Install barrier mats at entrances to pick up grit and moisture. (Please note, some rubber-backed mats may discolour the floor)
- ✓ Ensure your furniture is fitted with protective pads where necessary to prevent scratches.
- ✓ Use protective cups under heavy furniture to prevent indentation.
- ✓ Remove spillages as quickly as possible to reduce risk of staining and causing slip hazards.
- ✓ Always use clean equipment when maintaining your floor.
- ✓ Regularly trim pets claws as these can cause fine scratches.

**Don't:**

- ✗ Use abrasive liquids or metal scouring pads as these can damage the floor.
- ✗ Clean the floor with solvents, caustic detergents, washing up liquids, soap powders, bleach, furniture polishes, petroleum based products, pine gels, stain removers or highly coloured products. Such products may make the floor slippery or cause permanent damage.
- ✗ Drag furniture with unprotected feet across the floor.



Camaro is resistant to everyday dirt and soil



Camaro is resistant to accidental splashes and temporary surface water



Dirty footprints are not a problem and can be easily wiped away



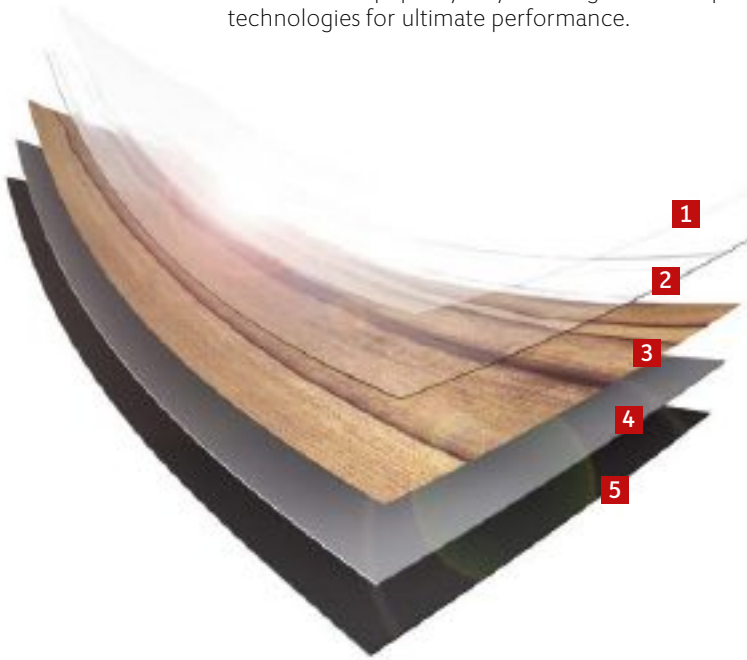
Everyday dirt and crumbs can be simply swept away





# TECHNICAL DETAILS

Camaro is a top quality vinyl flooring in tile and plank formats. Each layer has been thermally pressed by means of innovative technologies for ultimate performance.



## 1. The Polyurethane Reinforcement

Thanks to a factory-applied polyurethane reinforcement, there is less work for you to do to care for your floor.

## 2. The Wear Layer

This transparent, extremely dense layer is hard-wearing and protects the decoration of the product. This allows the surface embossing to create a highly authentic effect.

## 3. The Decoration Layer

Each design has been specifically developed for Camaro by means of extensive trend research and the commissioning of experienced product designers.

## 4. The Stabilisation Layer

Improved dimensional stability is achieved by minimising the effect of surrounding physical properties (e.g. temperature fluctuations).

## 5. The Load-Bearing Layer

The basis for the long service life and high performance of Camaro.



EN 14041

The following table features technical details, if you require any further information, contact Polyflor Customer Technical Services on +44 (0)161 767 1912, or email [tech@polyflor.com](mailto:tech@polyflor.com)

CHARACTERISTICS	CAMARO	CHARACTERISTICS	CAMARO
Type of floorcovering EN 649 / EN ISO 10582	Heterogeneous, PVC	Abrasion resistance EN 649 EN ISO 10582	Group T Type 1
Surface Treatment	Polyurethane Reinforcement (PUR)	Dimensional stability EN 434 / EN ISO 23999	≤ 0.1%
Total Weight EN 430 / EN ISO 23997	3,600 g/m <sup>2</sup>	Colour fastness to artificial light *	≥ 6 ISO 105-B02 method 3
Performance classification EN 685 / EN ISO 10874	23, 31	Behaviour to fire EN 13501-1	Bfl - S1
Gauge EN 428 / EN ISO 24346	2.0mm	Slip resistance **	EN 13893 Class DS (Dry condition) DIN 51130 R10 AS/NZS 4586 R10 For safety flooring with sustainable wet slip resistance, refer to the Expona Control or Polysafe ranges
Wear layer thickness EN 429 / EN ISO 24340	0.3mm	VOC emissions	Eurofins - Indoor Air Comfort Gold AgBB - Very low emissions Floorscore - Certified product
Plank size EN 427 / EN ISO 24342 and packaging details	192 @ 76.2 x 228.6mm = 3.34m <sup>2</sup> 36 @ 101.6 x 914.4mm = 3.34m <sup>2</sup> 24 @ 152.4 x 914.4mm = 3.34m <sup>2</sup> 18 @ 152.4 x 1219.2mm = 3.34m <sup>2</sup> 15 @ 184.2 x 1219.2mm = 3.37m <sup>2</sup> 12x3 @ 76.2 / 101.6 / 152.4 x 914.4mm = 3.62m <sup>2</sup> 14 @ 203.2 x 1219.2mm = 3.46m <sup>2</sup>	Chemical resistance EN 423 / EN ISO 26987	***
Tile size EN 427 / EN ISO 24342 and packaging details	36 @ 304.8 x 304.8mm = 3.34m <sup>2</sup> 18 @ 304.8 x 609.6mm = 3.34m <sup>2</sup> 36 @ 152.4 x 609.6mm = 3.34m <sup>2</sup>	Castor chair suitability EN 425 / ISO 4918	Suitable, type W, EN 12529
Residual indentation EN 433 / EN ISO 24343-1	≤ 0.05mm	Underfloor heating suitability EN 1264-2	Suitable, max. 27° C

\* We recommend that adequate UV protection be taken against products being installed in direct sunlight as fading may occur.

\*\* For clarification regarding slip resistance, consult Polyflor. See product pages (80-83) for R values.

\*\*\* Resistant depending on concentration and time of exposure. In case of increased impact of oils, grease, acids, alkalis and other aggressive chemicals, please contact us.